

MLS#26-542

ENGEL & VÖLKERS<sup>®</sup>  
SNELL REAL ESTATE

---

## Copala Tower 3 3105

Price: \$675,000 USD | 13,500,000 MXN



**Beds:** 3

**Baths:** 2

**Sqft:** 2,138.23

**Type:** Condos

**Lot Size:** 2138.23

**View:** Copala

**Community:** Quivira

**Subdivision:** Copala

---

**Email:** [info@snellrealestate.com](mailto:info@snellrealestate.com)

**Office (MX):** +52 624-105-8100

**Toll Free (US):** +1 713-832-1035

## OVERVIEW

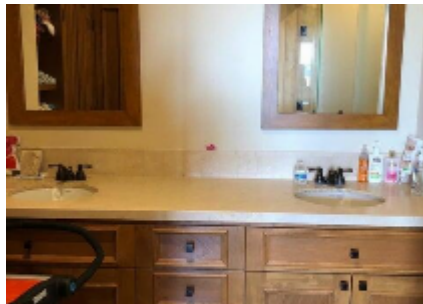
This beautifully designed condominium at Copala offers an exceptional layout that blends tranquility, sophistication, and functionality. Located on the ground floor of Tower 3, this 3-bedroom, 2.5-bath residence is ideal for full-time living, a second home, or hosting visiting family and friends. Two bedrooms open directly to the garden, just steps from a nearby swimming pool. The condo features an expansive open terrace, perfect for outdoor dining and lounge areas, enhancing seamless indoor-outdoor living. Owners enjoy exclusive access to the Copala Club House with movie theater, gym, deli, swimming pool, and infinity-view amenities.

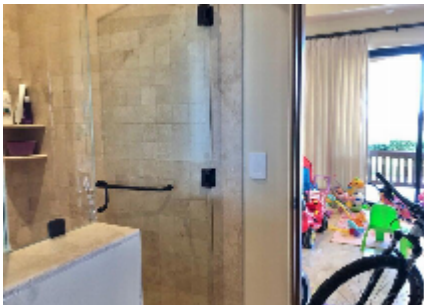
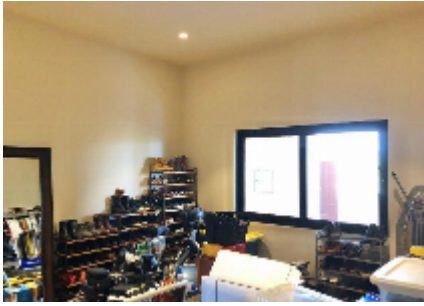
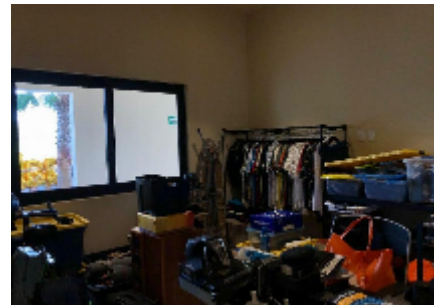
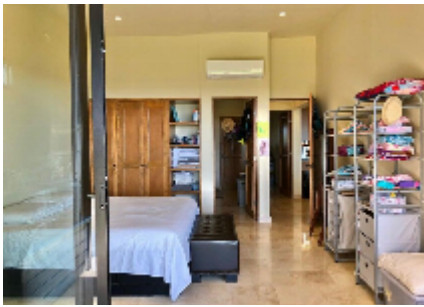
## PROPERTY FEATURES

- Property Name: Copala Tower 3 3105
- Street Name: Via Ferrea
- Unit #: 3,105
- Zone: Pacific
- Area: Pacific South
- Community: Quivira
- Subdivision: Copala
- Construction: Completed
- Price (USD): 675,000
- Seller Financing Offered?: No
- Total M2: 198.72
- Total SqFt: 2,138.23
- AC M2: 149.49
- AC SqFt: 1,608.51
- Primary View: Local
- Year Built: 2,019
- Decks/Patios M2: 49.23
- Secondary View: Ocean
- Decks/Patios SqFt: 529.71
- Stories: 6
- Total Bedrooms: 3
- Full Baths: 2
- Mstr Plan Community: Yes
- 1/2 Bath: 1
- Furnished: Unfurnished
- Style: Ground Level
- Floor Number: 0
- # Units in Develop: 356
- Total Rooms: 3
- Parking on Property: 2 spaces
- Dishwasher
- Dryer: Gas
- Microwave
- Oven: Gas
- Refrigerator/Freezer
- Cook Top
- Internet: Infinitem (phasing this field out)
- Air Conditioning: Mini-Split
- Ceiling Fans
- Security Guard
- Tennis Court
- Beach Club
- Elevator
- Fence
- Garden
- Gym
- Kiddy Park
- Pickle Ball Court
- Picnic Area

## GALLERY







**LOCATION**

