

MLS#26-1940

ENGEL & VÖLKERS[®]
SNELL REAL ESTATE

El Tule Boutique Development

Price: \$2,950,000 USD | 59,000,000 MXN



Beds: 5

Baths: 6

Sqft: 7,796.16

Type: Houses

Lot Size: 7796.16

View: El Tule-Inland:General

Community: El Tule-Inland

Subdivision: El Tule-Inland:General



CINDY ANN DAHL

Fax: 624-128-7906

Office: 624-128-7906

Email: c.dahl@snellrealestate.com



LYDIA TECLES

Fax: 624-355-1269

Office: 624-355-1269

Email: l.tecles@snellrealestate.com

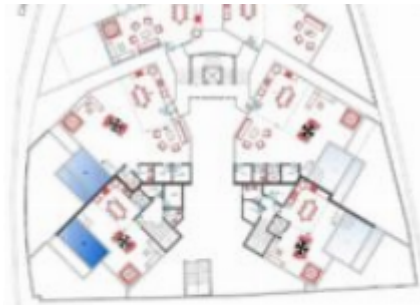
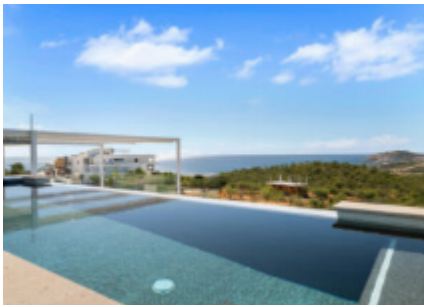
OVERVIEW

SAVVY INVESTOR'S DREAM -- BUILT WITH EXCEPTIONAL QUALITY & LIMITLESS POTENTIAL. A rare turnkey development opportunity distinguished by elite construction standards - a level of quality seldom found in Los Cabos. Offered as a complete 10-unit boutique project, it includes two fully finished, luxury turnkey residences showcasing the superior craftsmanship, premium materials, and structural durability that define this development. The remaining eight units are structurally prepared and ready to be completed according to the existing design or customized to match the buyer's vision. Blueprints are in early conceptual stage and can be modified to create a variety of high-value concepts, such as: Boutique hotel, Luxury branded residences, Wellness or medical retreat,

PROPERTY FEATURES

- Property Name: El Tule Boutique Development
- Street Name: El Tule
- Construction: Completed
- Price (USD): 2,950,000
- Seller Financing Offered?: Yes
- Financing: Cash/Efectivo
- Lot M2: 1,900
- Total M2: 724.55
- Total SqFt: 7,796.16
- AC M2: 337.38
- AC SqFt: 3,630.21
- Primary View: Ocean
- Zone: San Jose Corridor
- Year Built: 2,023
- Decks/Patios M2: 387.17
- Secondary View: Mountain
- Decks/Patios SqFt: 4,165.95
- Area: SJD Corr-Inland
- Total Bedrooms: 5
- Community: El Tule-Inland
- Mstr Plan Community: Yes
- Subdivision: El Tule-Inland:General
- FullBaths: 6
- 1/2Baths: 0
- Style: Multiple Levels
- Furnished: Furnished
- Garage Stalls: 2
- Clothes Dryer: Electric
- Clothes Washer
- Dishwasher
- Freezer
- Oven: Electric
- Range: Gas
- Wine Fridge
- Internet: Infinitum
- Ceiling Fans
- Air Conditioning: Central
- Construction Type: Insulated Foam Concrete
- Flooring Types: Other
- Bar
- BBQ Area
- Deck
- Fire Pit
- Fireplaces
- Hot Tub/Jacuzzi
- Patio
- Pool
- Pool Heater
- Second Kitchen
- Sitting Area
- Storage Area
- Terrace
- Gated
- Guarded

GALLERY





LOCATION

