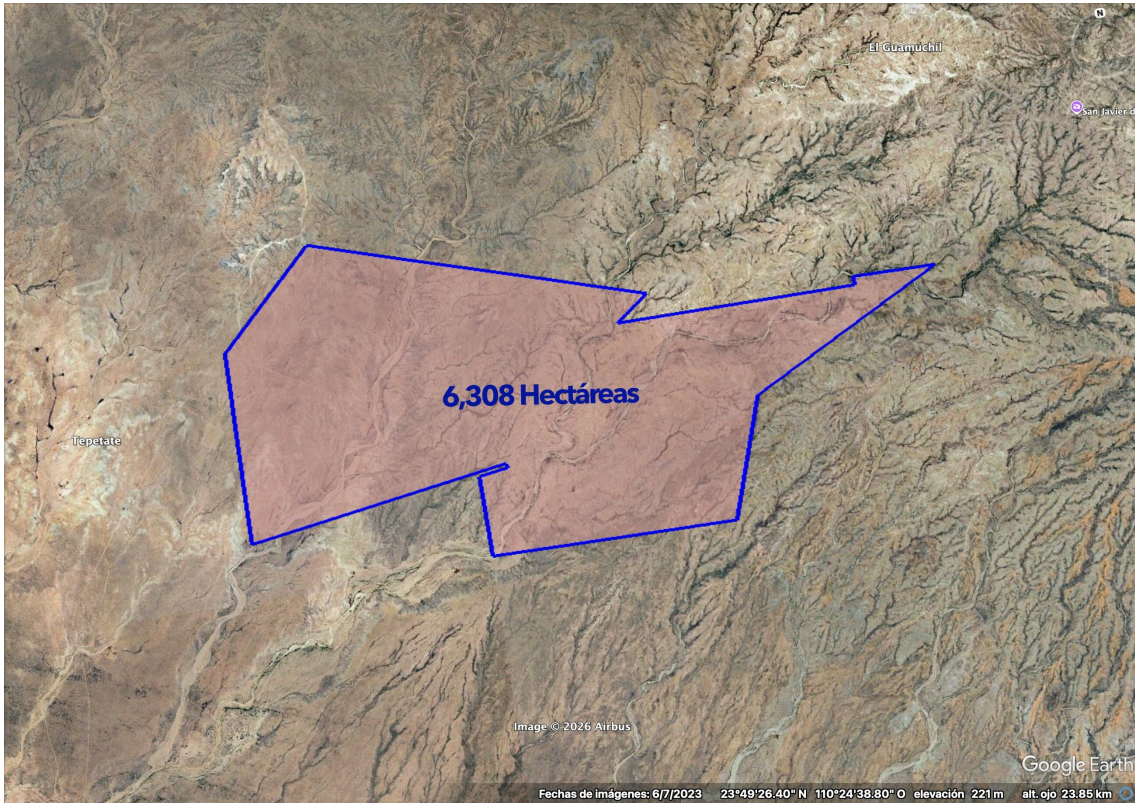


MLS#26-812

ENGEL & VÖLKERS[®]
SNELL REAL ESTATE

Rancho La Mora & Los Laureles

Price: \$3,500,000 USD | 70,000,000 MXN



Beds:

Baths:

Sqft: N/A

Type: Land

Lot Size:

View: Chametla

Community: Chametla

Subdivision: Chametla

Email: info@snellrealestate.com

Office (MX): +52 624-105-8100

Toll Free (US): +1 713-832-1035

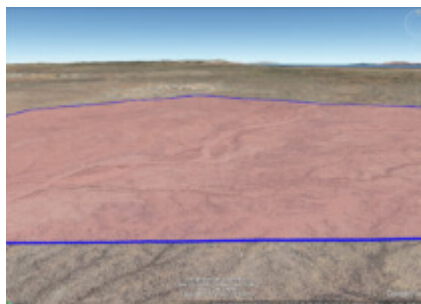
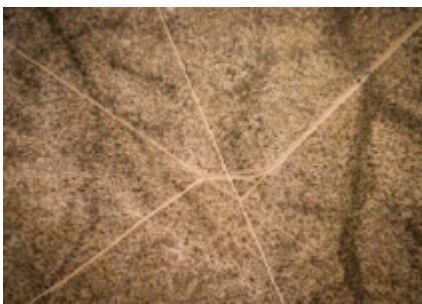
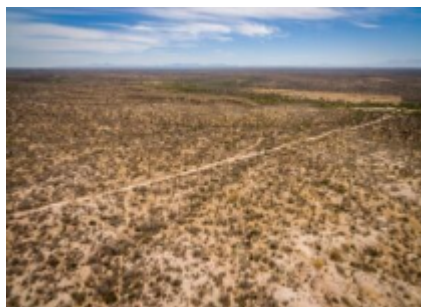
OVERVIEW

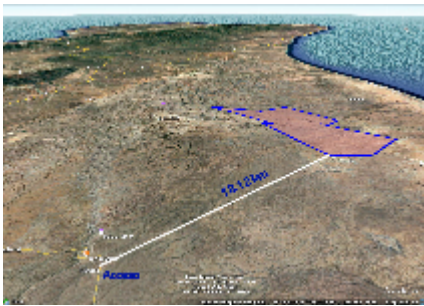
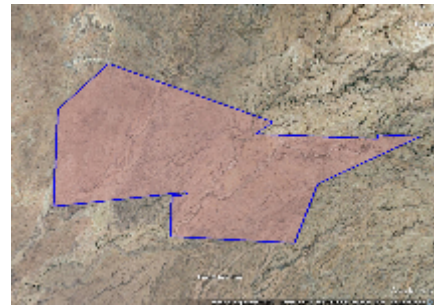
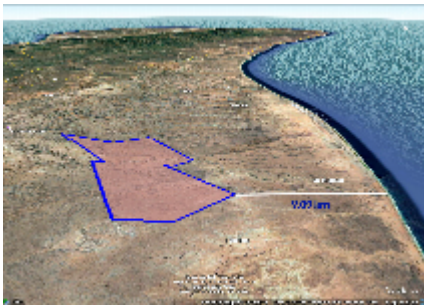
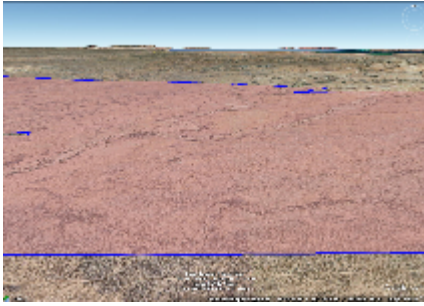
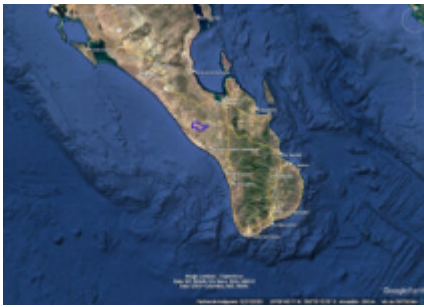
A once-in-a-lifetime Baja mega-land acquisition. Rancho La Mora & Los Laureles present a monumental landholding southwest of Km 39 on the La Paz-Constitución Highway: 42,940,064 m² (4,294 ha) titled, with expansion in regularization to 63,080,000 m² (6,308 ha / 15,587 acres). Offered at \$3.5M USD — APPROXIMATELY JUST 5 CENTS PER M². A scale rarely available at a virtually irreplaceable basis. This is an extraordinary generational acquisition. Semi-flat 2% slope, 18 km to CFE power, 42 km to the coast. Ideal for renewable energy, large-scale agriculture, or a city-scale master development practically almost given for free. Para la versión en español da click en "More"...

PROPERTY FEATURES

- Property Name: Rancho La Mora & Los Laureles
- Zone: La Paz
- Area: El Centenario
- Community: Chametla
- Subdivision: Chametla
- Price (USD): 3,500,000
- Seller Financing Offered?: No
- Financing: Bank/Banco
- Lot M2: 63,080,000
- Primary View: Mountain
- Secondary View: Territory
- Mstr Plan Community: No

GALLERY





LOCATION

