

MLS#25-4547

ENGEL & VÖLKERS[®]
SNELL REAL ESTATE

Terrasol #134 &

Price: \$1,700,000 USD | 34,000,000 MXN



Beds: 1

Baths: 2

Sqft: 2,203.33

Type: Condos

Lot Size: 2203.33

View: Terrasol

Community: CSL Beach

Subdivision: Terrasol



CINDY ANN DAHL

Fax: 624-128-7906

Office: 624-128-7906

Email: c.dahl@snellrealestate.com

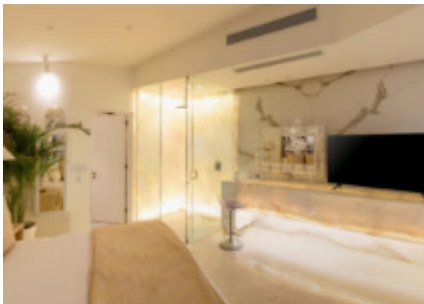
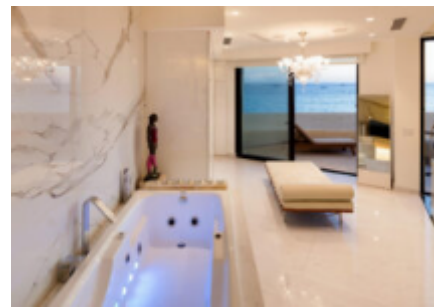
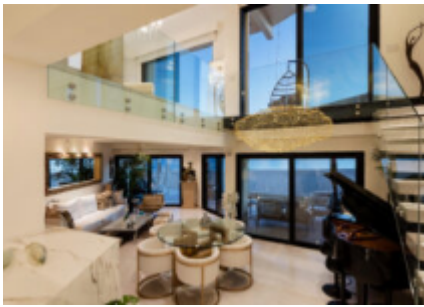
OVERVIEW

Wake up to the sound of waves and breathtaking, unobstructed views of the Pacific Ocean in this rare, one-of-a-kind oceanfront condo. Thoughtfully designed by combining two levels into a single, spacious residence, this one-bedroom, two-bathroom home offers the ultimate in coastal luxury. Step inside to find a bright, open-concept living space with floor-to-ceiling windows that frame the endless blue horizon. High-end finishes and designer touches are found throughout, including a modern kitchen equipped with top-of-the-line appliances, perfect for cooking with a view. Upstairs, the private primary suite offers serene ocean vistas, a spa-inspired en-suite bathroom, and ample closet space. A second full bathroom on the main level adds convenience for guests.

PROPERTY FEATURES

- Property Name: Terrasol #134 &
- Unit #: 234
- Zone: Cabo San Lucas
- Area: CSL-Beach & Marina
- Community: CSL Beach
- Subdivision: Terrasol
- Construction: Completed
- Price (USD): 1,700,000
- Seller Financing Offered?: Yes
- Total M2: 204.77
- Total SqFt: 2,203.33
- AC M2: 184
- AC SqFt: 1,979.84
- Primary View: Oceanfront
- Year Built: 1,987
- Decks/Patios M2: 20
- Secondary View: Ocean
- Decks/Patios SqFt: 215.20
- Stories: 2
- Total Bedrooms: 1
- Full Baths: 2
- Mstr Plan Community: Yes
- 1/2 Bath: 0
- Furnished: Furnished
- Floor Number: 2
- # Units in Develop: 130
- Dishwasher
- Disposal
- Dryer: Electric
- Microwave
- Range: Electric
- Refrigerator/Freezer
- Ice Maker
- Wine Fridge
- Internet: Infinitum (phasing this field out)
- Air Conditioning: Mini-Split
- Ceiling Fans
- Water Purification
- Pool
- Pool Heater
- Security Guard
- Tennis Court
- Fence
- Garden
- Gym

GALLERY





LOCATION

