

MLS#25-5460

ENGEL & VÖLKERS<sup>®</sup>  
SNELL REAL ESTATE

---

## Tule Boutique Development

**Price: \$2,950,000 USD | 59,000,000 MXN**



**Beds:**

**Baths:**

**Sqft:** 6,952.36

**Type:** Commercial

**Lot Size:** 6952.36

**View:** ResidenciasLomasTule

**Community:** El Tule-Inland

**Subdivision:** ResidenciasLomasTule



**LYDIA TECLES**

**Fax:** 624-355-1269

**Office:** 624-355-1269

**Email:** l.tecles@snellrealestate.com



**CINDY ANN DAHL**

**Fax:** 624-128-7906

**Office:** 624-128-7906

**Email:** c.dahl@snellrealestate.com

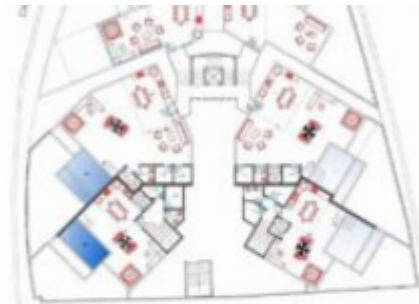
## OVERVIEW

SAVVY INVESTOR'S DREAM ??? BUILT WITH EXCEPTIONAL QUALITY & LIMITLESS POTENTIAL. A rare turnkey development opportunity distinguished by elite construction standards - a level of quality seldom found in Los Cabos. Offered as a complete 10-unit boutique project, it includes two fully finished, luxury turnkey residences showcasing the superior craftsmanship, premium materials, and structural durability that define this development. The remaining eight units are structurally prepared and ready to be completed according to the existing design or customized to match the buyer's vision. Blueprints are in early conceptual stage and can be modified to create a variety of high-value concepts, such as: Boutique hotel, Luxury branded residences, Wellness or medical retreat,

## PROPERTY FEATURES

- Property Name: Tule Boutique Development
- Zone: San Jose Corridor
- Area: SJD Corr-Inland
- Community: El Tule-Inland
- Subdivision: ResidenciasLomasTule
- Construction: Pre-Construction
- Price (USD): 2,950,000
- Seller Financing Offered?: Yes
- Lot M2: 1,990.79
- Total M2: 646.13
- Total SqFt: 6,952.36
- AC M2: 612.55
- AC SqFt: 6,591.04
- Primary View: Ocean
- Year Built: 2,023
- Decks/Patios M2: 77.94
- Secondary View: Territory
- Decks/Patios SqFt: 838.63
- Bathrooms: 6

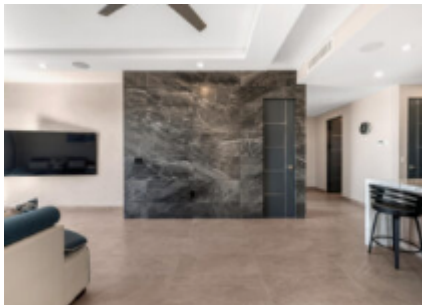
## GALLERY











LOCATION

