

MLS#26-1608

ENGEL & VÖLKERS®  
SNELL REAL ESTATE

---

## Yameto Torre II

**Price: \$312,000 USD | 6,240,000 MXN**



**Beds:** 2

**Baths:** 2

**Sqft:** 1,388.04

**Type:** Condos

**Lot Size:** 1388.04

**View:** Cumbre del Tezal

**Community:** El Tezal-West

**Subdivision:** Cumbre del Tezal

---

**Email:** [info@snellrealestate.com](mailto:info@snellrealestate.com)

**Office (MX):** +52 624-105-8100

**Toll Free (US):** +1 713-832-1035

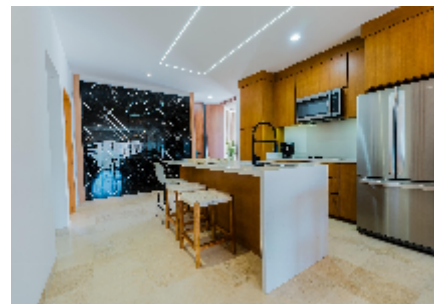
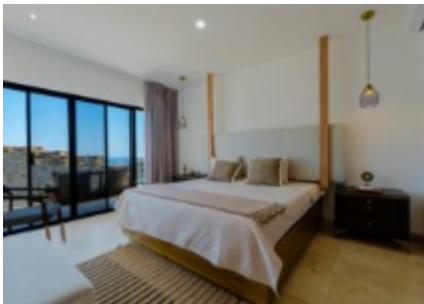
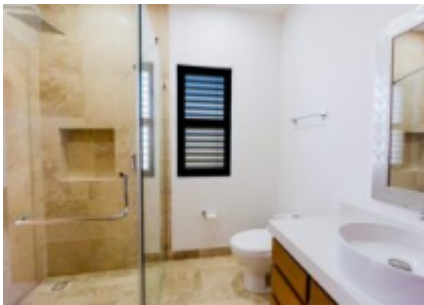
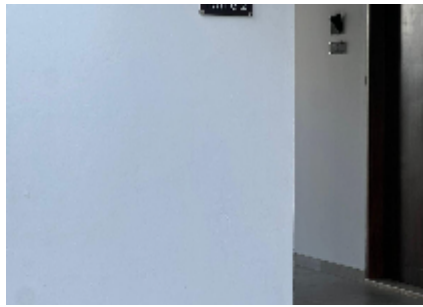
## OVERVIEW

Discover Yameto in Cabo San Lucas, a condominium that blends modern design, functionality, and comfort in every space. Featuring two bedrooms, two full bathrooms, and parking for two cars, it stands out for its high-quality finishes such as marble flooring and a fully equipped kitchen with a quartz countertop. It is delivered fully equipped with included appliances: a 5-burner electric ceramic cooktop, a three-door French Door refrigerator, and a microwave hood. Additional features like a smart lock and a private terrace. Yameto elevates your lifestyle with amenities designed for maximum enjoyment: a swimming pool, gym, green areas, children's spaces, and a rooftop for gathering or relaxing. With 24/7 security and controlled access.

## PROPERTY FEATURES

- Property Name: Yameto Torre II
- Street Name: calle Isla Natividad
- Unit #: 201
- Zone: Cabo Corridor
- Area: CSL Cor-Inland
- Community: El Tezal-West
- Subdivision: Cumbre del Tezal
- Construction: Completed
- Price (USD): 312,000
- Seller Financing Offered?: No
- Total M2: 129
- Total SqFt: 1,388.04
- AC M2: 115
- AC SqFt: 1,237.40
- Primary View: Ocean
- Year Built: 2,025
- Decks/Patios M2: 14
- Secondary View: Mountain
- Decks/Patios SqFt: 150.64
- Stories: 1
- Total Bedrooms: 2
- Full Baths: 2
- Mstr Plan Community: Yes
- 1/2 Bath: 1
- Furnished: Part Furnished
- Style: 1 Level
- Floor Number: 2
- # Units in Develop: 24
- Total Rooms: 2
- Parking on Property: 2 spaces
- Microwave
- Range: Gas
- Refrigerator/Freezer
- Pool
- Security Guard
- Fence
- Garden
- Gym
- Picnic Area

## GALLERY





## LOCATION

